

Figure 3.18 Chromatogram of amlodipine, glimepiride, and atorvastatin at pH 7.8 of the mobile phase

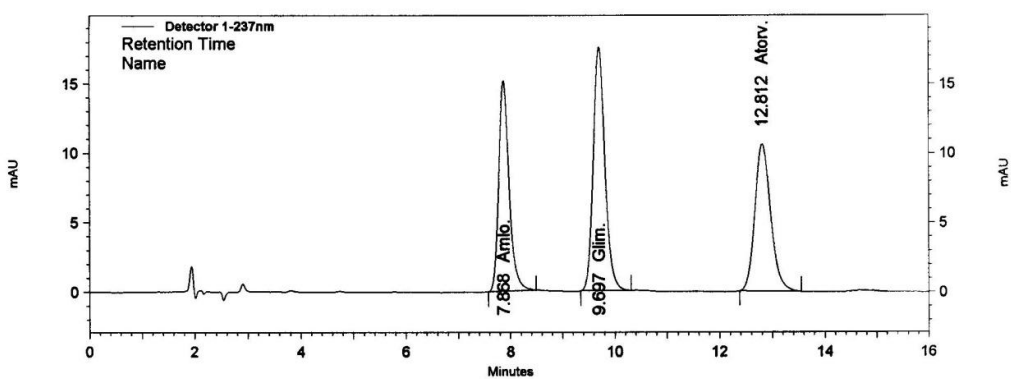


Figure 3.19 Chromatogram of amlodipine, glimepiride, and atorvastatin at pH 8.0 of the mobile phase

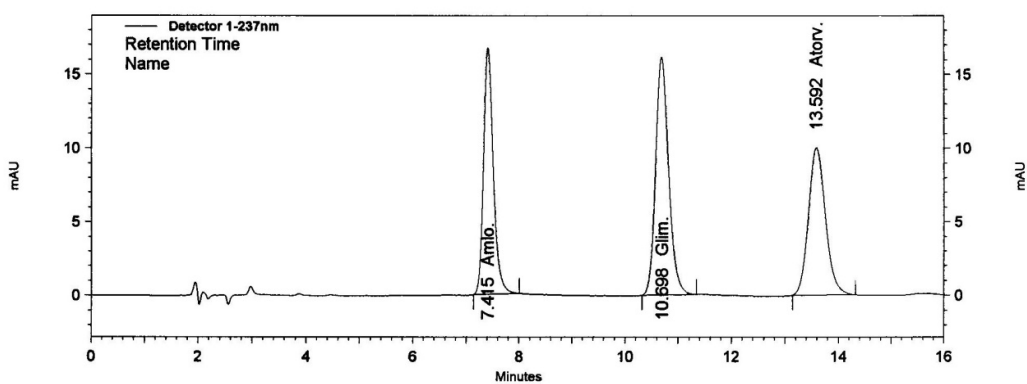


Figure 3.20 Chromatogram of amlodipine, glimepiride, and atorvastatin at pH 8.2 of the mobile phase